

How to: Connect your Cable Modem Using Ethernet

► Summary

There are two ways to connect your computer to the Cable modem for your High Speed Internet service: An Ethernet cable modem and an Ethernet port in your computer and a USB cable modem and a USB port in your computer.

This tutorial will cover how to install your cable modem using an Ethernet connection. Before you begin, verify that you have all the items needed to install your Cox High Speed Internet Cable Modem. You should have the following items

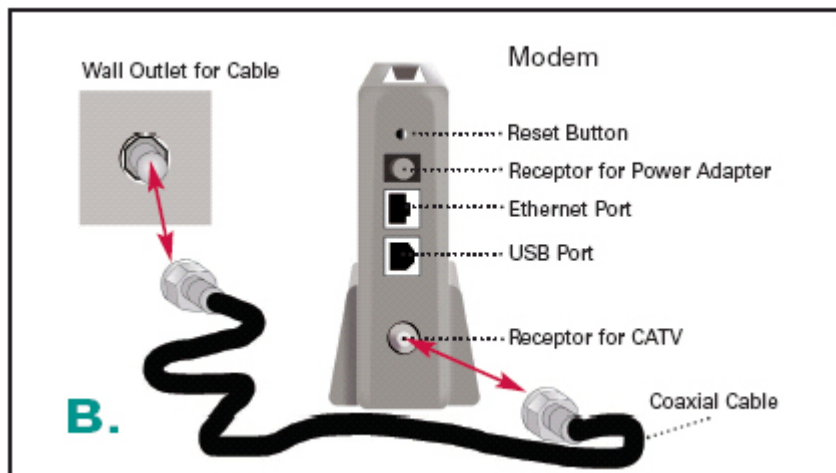
Items you will need:

- Lindsey Communications High Speed Internet Service
- Cable Modem
- Ethernet Cable
- Coaxial Cable

► Manual Solution

The Cable Modem and Computer should be disconnected from the power source, before beginning the below process.

1. Connect one end of the **coaxial cable to the cable wall outlet**.
2. Connect the other end of the **coaxial cable to the cable modem**.

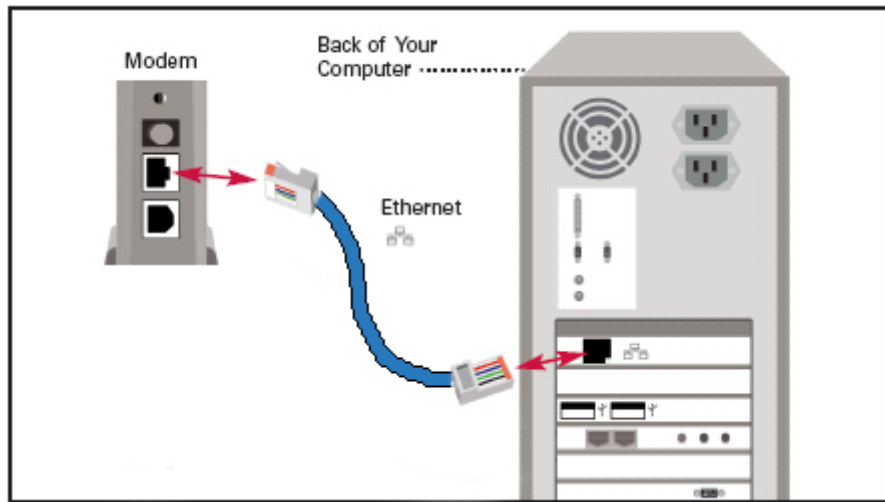


3. Plug the cable modem **power adapter into a wall outlet**.

Most cable modems are "on" all the time and do not have a switch. If your modem has a power switch, turn on the modem. Wait for the modem to Synch with the cable network. This may take up to 5 minutes.

4. Connect one end of the **Ethernet cable to the back of the modem**.

5. Connect the other end of the **Ethernet cable to the back of your PC.**



6. Connect the **power** to your computer, turn on the PC.
7. Check the **modem lights for proper status**. Most modem lights operate similarly, some blink at start-up, and then become steady, except for the “activity” light, which may blink continuously. If modem lights do not come on, turn off your computer, unplug the modem, wait 30 seconds, plug modem back in, then restart your PC.

Your modem is now connected and you are ready to surf the Internet using Lindsey Communications High Speed Internet Service.