

## How to: Find Which Version of Windows You Are Using

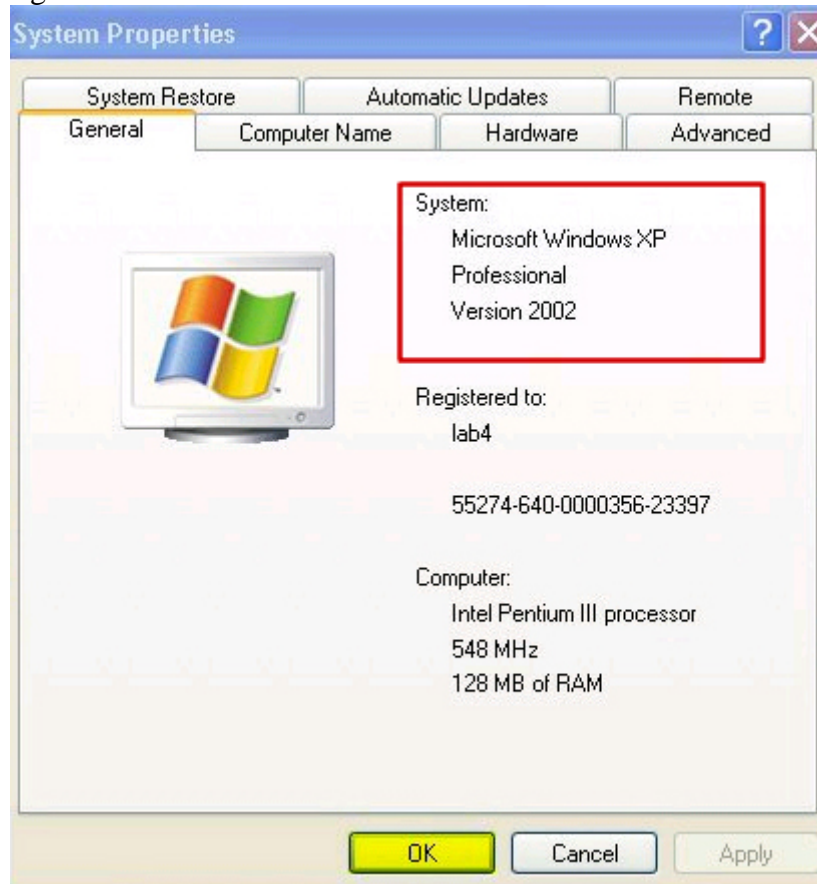
### ► Summary

While troubleshooting your Lindsey Communications High Speed internet connection there are times that you will need to find which version of Windows you are currently using. Please follow the below steps to check which version of Windows you are running.

### ► Interactive Solution

### ► Manual Solution

1. To begin, click the **Start** button, Right-click on **My Computer**.
2. Select **Properties**. Your version of windows will appear under System to the right.



3. Click **OK** when finished.

**All Steps Complete.**