

How to: Verify your TCP / IP Network Settings in Windows 2000

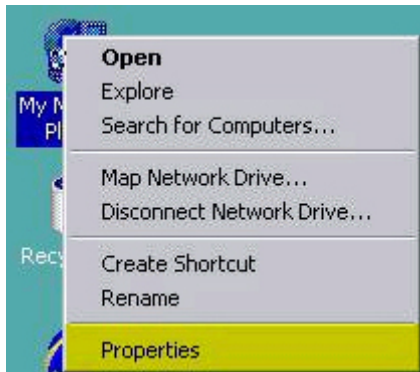
► Summary

While troubleshooting your Lindsey Communications High Speed internet connection there are times that you will need to verify your TCP/IP Network settings. Please follow the below steps to verify your Network Settings are correct.

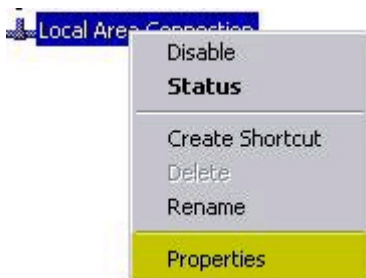
► Interactive Solution

► Manual Solution

1. To begin, right-click **My Network Places**, select **Properties**.



2. Right-click your **Local Area Connection**, select **Properties**.

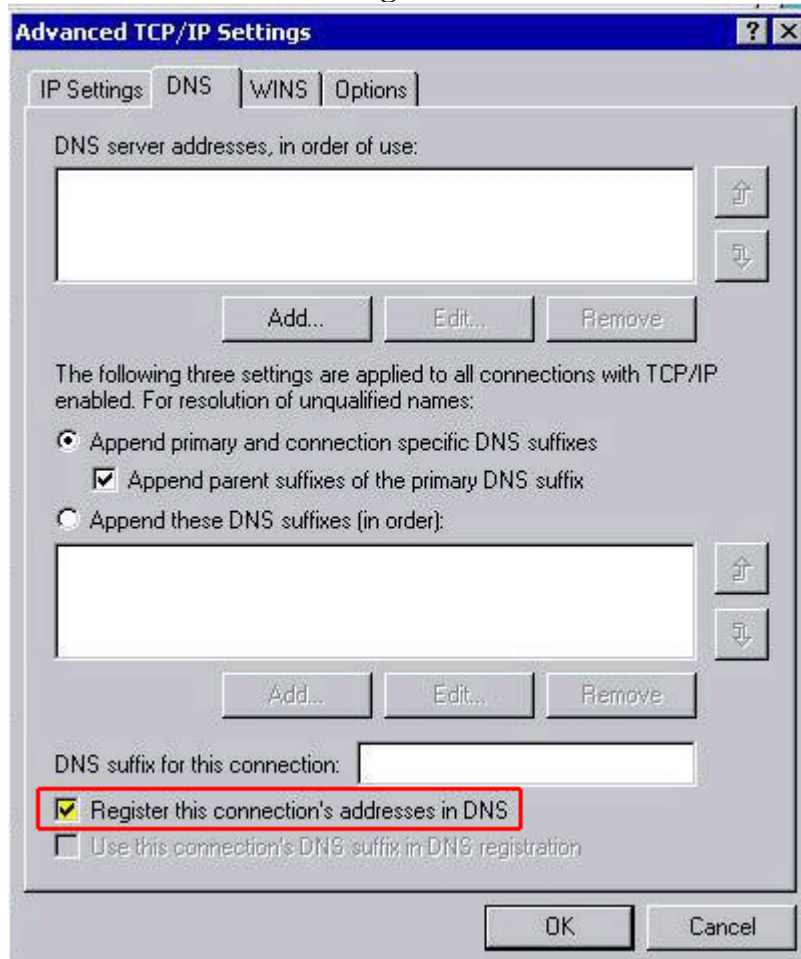


3. Highlight the **Internet Protocol(TCP/IP)**, click **Properties**.



4. Verify both the **IP Address** and **DNS** are set to **obtain automatically**. Click the **Advanced** button.
5. Click the **DNS** tab.

6. Remove the check beside **Register this connection's address in DNS**.



7. Click **OK** to close the Advanced Options.
8. Click **OK** to close the TCP/IP Properties.

All Steps Complete.