

How to: Release / Renew an IP address in Windows ME.

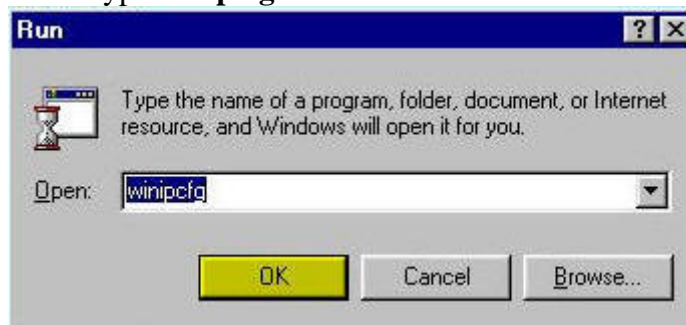
► **Summary**

Refers to troubleshooting Lindsey Communications High Speed Internet Service for Windows ME by configuring the IP address.

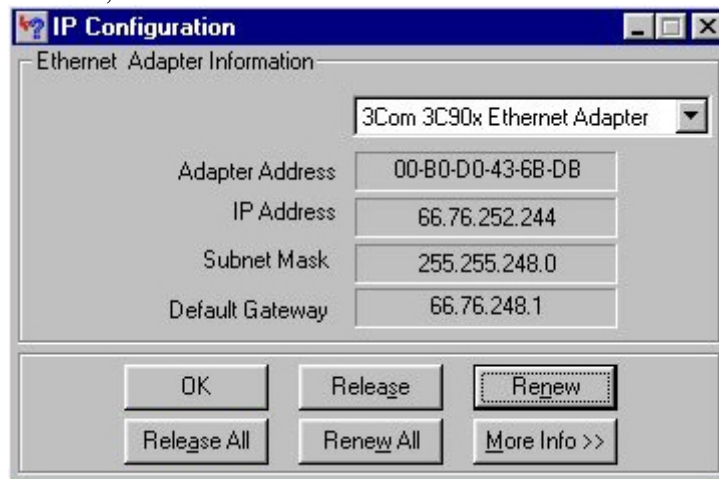
► **Interactive Solution**

► **Manual Solution**

1. To view your current IP configuration, begin by clicking the **Start** button, select **Run**. Type **winipcfg** in the run box and click **OK**.



2. The IP configuration window will appear. In the drop-down box at the top, select your Ethernet Adapter, or if using USB, the Toshiba Cable Modem.
3. In the IP configuration box, your current IP will be listed. To release the IP address, click **Release** button.



4. To renew the IP Address, click **Renew**.
5. Your IP address should now be renewed. Click **OK** to close the IP Configuration window.

All Steps Complete