

How to: Check your Ethernet Network Card in Windows 2000

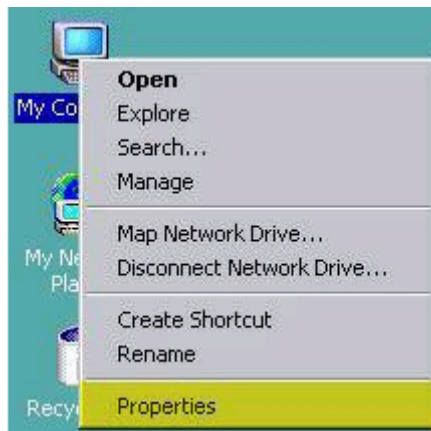
► Summary

During troubleshooting your Lindsey Communications High Speed internet connection there are times that you will need to verify your Ethernet Network card is functioning correctly. Please follow the below steps to verify your Ethernet NIC is working correctly.

► Interactive Solution

► Manual Solution

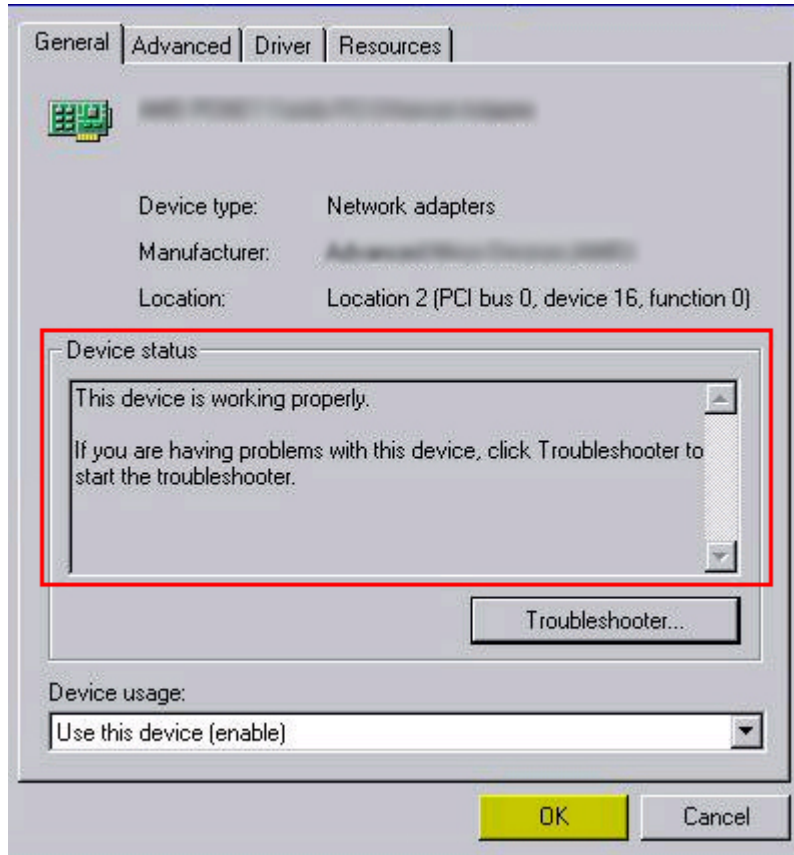
1. To begin right-click the **My Computer** icon, select **Properties**.



2. Click the **Hardware** tab.
3. Click the **Device Manager** button.
4. Double-click the **Network Adapters** to expand the list. Right-click your **ethernet adapter**, and select **Properties**.



5. The **Device status** Will tell you whether the device is working properly.



6. Click **OK** when finished.

All Steps Complete.