

How to: Check your Ethernet Network Card in Windows XP.

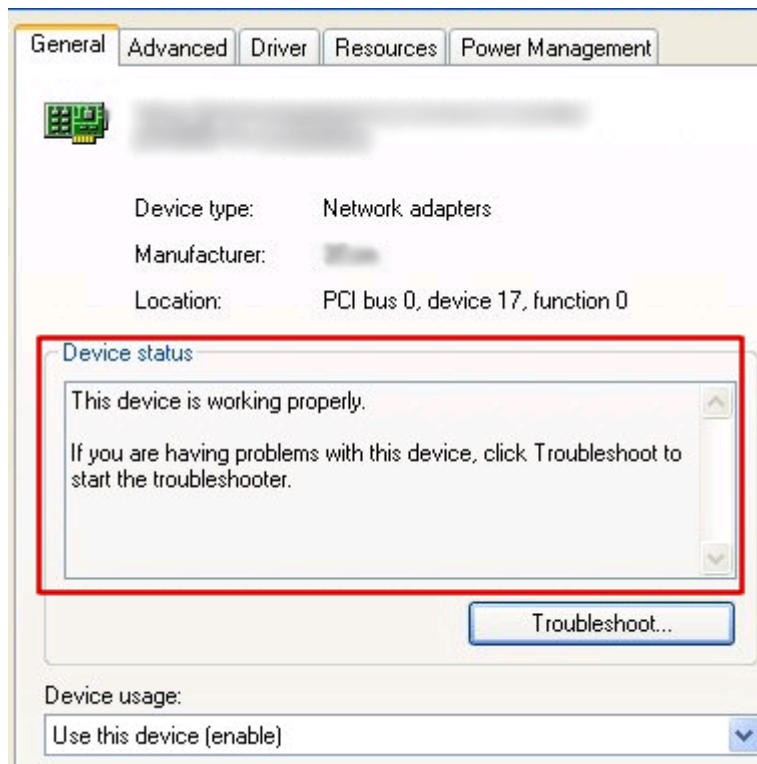
► **Summary**

During troubleshooting your Lindsey Communications High Speed Internet connection there are times that you may need to verify that your Ethernet Network card is functioning correctly. Please follow the below steps to verify your Ethernet NIC is working correctly.

► **Interactive Solution**

► **Manual Solution**

1. Click the **Start** button.
2. Right click **My Computer**, select **Properties**.
3. Click the **Hardware** tab.
4. Click the **Device Manager** button.
5. Double click **Network Adapters**.
6. Double click your **Ethernet Card**.
7. Insure your card is working properly. If it has a problem, the **Device Status** will indicate known status, click **OK** when finished.



All Steps Complete.

